

# EASY, ACCURATE AND CONSISTENT

## COMPLETE PRODUCT GUIDE



**1800 817 462**  
[advantagefeeders.ie](http://advantagefeeders.ie)



**ADVANTAGE  
FEEDERS**



# Welcome to Advantage Feeders

A family owned business based in the Victorian Goldfields that designs and manufactures livestock feeding equipment. We distribute across 60 distributors Australia wide and to international distributors in the USA, Canada, New Zealand, the UK and Ireland.

## The Founders Message

The team at Advantage Feeders is proud to be celebrating its 15th anniversary this year.

Because of our great customers, distributors, and team, we have delivered our market-leading and pioneering products all around the globe.

As a 5th generation farmer, I was frustrated by the waste from trail feeding and the inability of meal feeders to control feed for livestock. I wanted to design a product range of the highest quality, that exceeded farmers' expectations on what they thought was possible, and saved farmers, like myself, time.

We are thrilled to announce that we have also invested in developing an exciting new product – the Lower Adjuster Cam. This was developed following some feedback from our customers asking for more accuracy and a system that everyone on a farm could set and achieve consistent positioning.

The Lower Adjuster Cam will improve the most controlled product on the market by making our 3-Way Restriction System even easier to use. It will also give our customers higher returns, which is what we believe to be an even greater outcome.

Thank you for your support over the last 15 years, and we look forward to supporting you with your production outcomes.

**Gerard Roney**

## Maximising Pasture Efficiency with our 3-Way Restriction System

Most pasture can be complemented with a supplement to improve rumen function and lead to increased livestock production. The quantity of supplement required in most applications is minimal, making the function of ration control crucial to realise the benefits of improved rumen function.

Traditional feeders rely on the animal becoming tired of licking and do not stop them from feeding. The Advantage Feeders 3-Way Restriction System is different; it offers more control over the height, depth and width of the feed access area with the Upper Adjuster, Lower Adjuster and Adjuster Guard.

When our 3-Way Restriction System is set in a limiting position, the animal's tongue can only touch a few grains or pellets with each lick. The animal accesses the feed using saliva to stick feed to its tongue. After approximately five minutes of licking, the animal's tongue becomes dry, and it can no longer access the feed. Depending on the field environment, livestock come to the feeder 5-10 times per day, creating a system of supplementation in little and often amounts.

Subject to the animal's size, a sheep may consume a heaped tablespoon or 20 grams in a five-minute licking period, and cattle may consume a cup or 150 grams. A feeder that relies on an animal tiring of licking cannot offer such a strict ration.

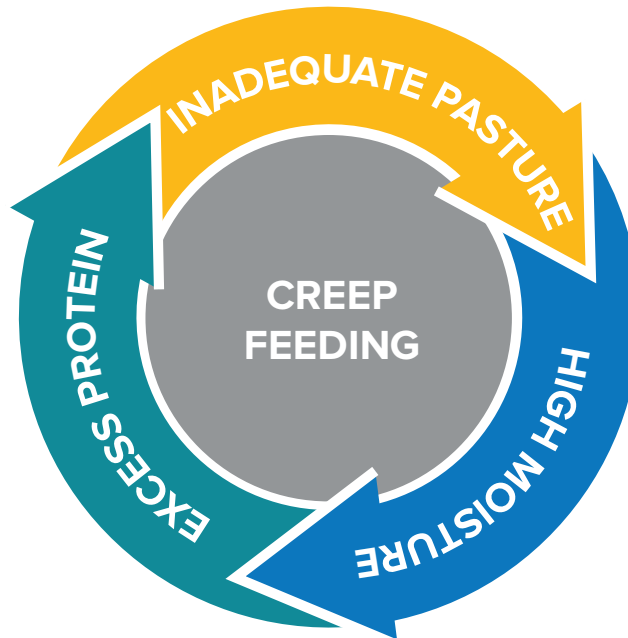
Controlling the ration has now become easier and more accurate with the Lower Adjuster Cam. These add to the innovative features of the Upper Adjuster Handles and the dual purpose Adjuster Guards.

### How our 3-Way Restriction System works



# Advantage Feeders Full Year Pasture Conversion System

The ration control of our 3-Way Restriction System allows you to maximise your pasture, fodder, and supplement feed conversion, all year.



The pressure of production goals mean that pasture is commonly inadequate in energy or protein to meet these goals. Advantage Feeders 3-Way Restriction System gives you the tools to achieve your production goals with labour and waste saving benefits while supporting the rumen to be more efficient in converting imperfect pasture.



During the growing phase of pasture, before flowering, the soluble protein level is often much higher than required. In this case, the animal wastes a substantial amount of energy excreting excess protein. This energy could be utilised for production. Advantage Feeders 3-Way Restriction System gives you the means to eliminate this issue and to maximise your production.

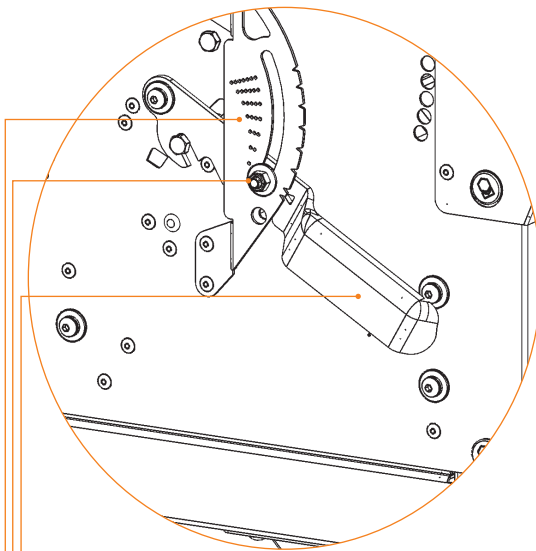


When breaking rains commence at the start of a growing season, pasture is often high in moisture and passes through stock too quickly to be fully absorbed. Advantage Feeders innovative 3-Way Restriction System gives you the tools to increase stocking rates so you can capitalise on the high quantity of quality pasture when it becomes abundant.



Creep feeding is a simple system that transforms the rumen of infant stock from non-functional to effective far quicker than consuming a diet of pasture alone. It short circuits the production system by having a young animal convert pasture into growth. Compared to traditional systems where a cow or ewe consumes pasture to produce milk to feed the young animal, creep feeding quadruples pasture conversion.

# HEAVY DUTY FEATURES ACROSS OUR RANGE OF MEAL FEEDERS



## STRONG HANDLE

The leverage of the 5mm thick handle allows the Upper Adjuster to be moved in small and accurate increments

## LOCKING NUT

The nyloc nut locking system makes it fast to reposition the Upper Adjuster

## GAUGE SYSTEM

Notch and dot system allows accurate settings irrespective of multiple users adjusting the feeder

## UNIQUE ID PRODUCT NUMBER

The number makes it easier to communicate with our Sales Support Team

## LARGE SIGHT GLASSES AT BOTH ENDS

Check the approximate feed volume from a distance

## STRONG ROOF PIVOTS

The roof pivot has a solid lug welded to a channel to withstand robust use

## ADJUSTER GUARD HOUSING

The Adjuster Guard can be housed under the weather protection to prevent it being lost when not in use

## UPPER ADJUSTER HANDLES

Adjustments are made from the end of the feeder, alleviating the need to kneel down (potentially in mud)

## SIDE WALL GUTTERS

Side lower wall gutters prevent moisture running into the feed area

## ADJUSTABLE HEIGHT PINS

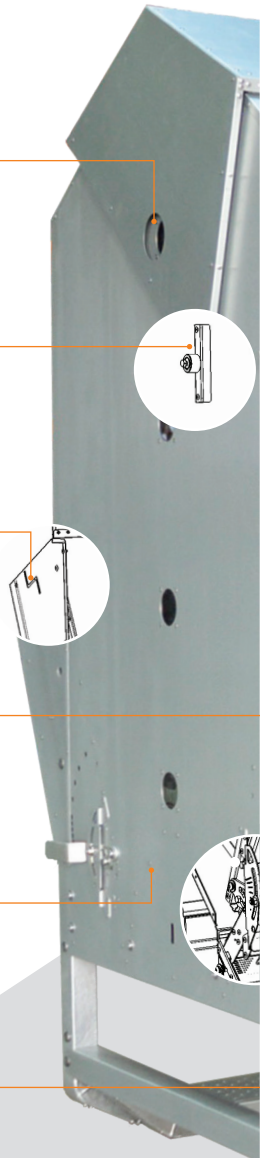
Chassis designed so the feeding height can be easily changed to suit all types of livestock

## STAINLESS STEEL FEED AREA

Reinforced stainless steel troughs and adjusters ensure the product endures

## **NEW** LOWER ADJUSTER CAM

Adjustments to the Lower Adjuster are made **easily, accurately and consistent** by rotating the cam





# 3800<sup>H</sup>D

**ADVANTAGE  
FEEDERS**  
advancing ruminant production

## DROP LOCK PIN ROOF LATCH

Roof latch uses reliable & simple drop lock pin latching system

## STRONG BRACING

Rain protection bracing increases the weather protection strength

## CLEANING TOOL AND TUBE SPANNER

Accessories are stored where livestock can't access them

## SPRING LATCHES

Spring clips allow the Adjuster Guards to be easily removed for cleaning

## DEEP TROUGHS

110mm deep troughs prevents waste and is designed for front end loader use

## ADJUSTER GUARDS

Adjuster Guards stop livestock bulldozing feed out

## SIX ADJUSTER BRACES

Adjuster Braces with dual tabs prevent livestock forcing access to additional feed

## HOT GAL DIPPED SKIDS

4x hot gal dipped skids provides superior longevity and stability from erosion

## ADJUSTABLE TINE GUIDES

Large 200x100mm adjustable tine guides make moving the feeder safe and easy

### ACCESSORIES:

- Calf Creep Gates Narrow
- Calf Creep Gates Wide
- Lamb Creep Panels
- Greedy Boards
- Mineral Attachment

# Meal Feeder Family

## Special features come as standard!

- 3-Way Restriction System
- Lower Adjuster Cams
- Stainless steel troughs and adjusters
- Upper Adjuster Handle
- Deep troughs
- Adjustable skid height
- Adjuster Guard
- Hot gal dipped skids
- Double skid

### 5500HD MEAL FEEDER 🐮



*Purpose built for cattle*

Weight: \_\_\_\_\_ 610kg  
 Feed volume: \_\_\_\_\_ 5500 litres  
 Feed weight – wheat: \_\_\_\_\_ 4350kg  
 Feed weight – barley/pellets: \_\_\_\_\_ 3500kg  
 Feed weight – oats: \_\_\_\_\_ 2900kg  
 Cattle/calves (field): \_\_\_\_\_ 40-50  
 Cattle/calves (indoors): \_\_\_\_\_ 30-35  
 Dimensions cattle height: \_\_\_\_\_ 2450x2305x2615

### 3800HD MEAL FEEDER 🐮 🐑



*Our unique handle designed allows for easy opening*

Weight: \_\_\_\_\_ 430kg  
 Feed volume: \_\_\_\_\_ 3800 litres  
 Feed weight – wheat: \_\_\_\_\_ 3000kg  
 Feed weight – barley/pellets: \_\_\_\_\_ 2400kg  
 Feed weight – oats: \_\_\_\_\_ 1900kg  
 Cattle/calves (field): \_\_\_\_\_ 40-50  
 Cattle/calves (indoors): \_\_\_\_\_ 30-35  
 Ewes/lambs (field): \_\_\_\_\_ 200-250  
 Ewes/lambs (indoors): \_\_\_\_\_ 120-150  
 Dimensions cattle height: \_\_\_\_\_ 2440x1650x2370  
 Dimensions sheep height: \_\_\_\_\_ 2440x1650x2170

### 1800HD MEAL FEEDER 🐮 🐑



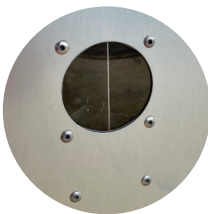
*Create the complete feed system by adding a Mineral Attachment*

Weight: \_\_\_\_\_ 350kg  
 Feed volume: \_\_\_\_\_ 1800 litres  
 Feed weight – wheat: \_\_\_\_\_ 1400kg  
 Feed weight – barley/pellets: \_\_\_\_\_ 1150kg  
 Feed weight – oats: \_\_\_\_\_ 900kg  
 Cattle/calves (field): \_\_\_\_\_ 40-50  
 Cattle/calves (indoors): \_\_\_\_\_ 30-35  
 Ewes/lambs (field): \_\_\_\_\_ 200-250  
 Ewes/lambs (indoors): \_\_\_\_\_ 120-150  
 Dimensions cattle height: \_\_\_\_\_ 2440x1650x1635  
 Dimensions sheep height: \_\_\_\_\_ 2440x1650x1435





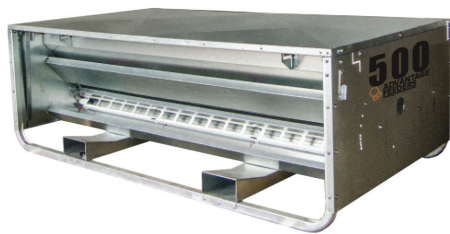
### 800HD MEAL FEEDER 🐮 🐑



*Division sheet in the hopper allows 2 feeds to be used*

Weight:	200kg
Feed volume:	850 litres
Feed weight – wheat:	600kg
Feed weight – barley/pellets:	500kg
Feed weight – oats:	425kg
Cattle/calves (field):	20-25
Cattle/calves (indoors):	15-20
Ewes/lambs (field):	100-125
Ewes/lambs (indoors):	60-75
Dimensions cattle height:	1200x1650x1635
Dimensions sheep height:	1200x1650x1435

### 500 MEAL FEEDER 🐑



*Purpose built for sheep*

Weight:	160kg
Feed volume:	500 litres
Feed weight – barley/pellets:	325kg
Dimensions sheep height:	2200x1160x760

### 150HD MEAL FEEDER 🐮 🐑



*Comes with brackets to hang feeder on gates and fences*

Weight:	33kg
Feed volume:	150 litres
Feed weight – wheat:	110kg
Feed weight – barley/pellets:	90kg
Feed weight – oats:	75kg
Cattle/calves (field):	6-10
Cattle/calves (indoors):	5-8
Ewes/lambs (field):	25-30
Ewes/lambs (indoors):	15-20
Dimensions:	820x388x790



# M1000HD Mobile Meal Feeder



FEED VOLUME 1000L



FEEDS 40-50 CATTLE/CALVES



FLOATATION TIRES OPERATE  
GREAT IN WET CONDITIONS



STAINLESS STEEL TROUGHS



LOAD SHARING TANDEM  
AXLE SUSPENSION



## 1000HD MOBILE MEAL FEEDER 🐮 🐑

*Easy, on farm towing capabilities built with floatations tyres makes perfect on field towing for wet conditions. One of our best-selling products, the M1000HD is easily transportable on field or indoors.*

Weight:	265kg
Feed volume:	1000 litres
Feed weight – wheat:	770kg
Feed weight – barley/pellets:	650kg
Feed weight – oats:	520kg
Cattle/calves (field):	40-50
Cattle/calves (indoors):	30-35
Ewes/lambs (field):	200-250
Ewes/lambs (indoors):	120-150
Dimensions cattle height:	3465x1200x1325
Dimensions sheep height:	3465x1200x1175



SCAN ME



*Want more product details?  
Visit our website and click  
on the Specifications tab.*

# Mobile Meal Feeder

All the Meal Feeder Family benefits with added Manoeuvrability

Advantage Feeders Mobile Meal Feeders are made with all the benefits and quality of our stationary meal feeders, however, with the added benefit of on-farm towing. The M5500HD, M3800HD and M1800HD have heavy duty suspension and the M1000HD has floatation tires. All mobile feeders have an adjustable height hitch.

## M5500HD MOBILE MEAL FEEDER 🐮



Weight: \_\_\_\_\_ 680kg  
Feed volume: \_\_\_\_\_ 5500 litres  
Feed weight – wheat: \_\_\_\_\_ 4350kg  
Feed weight – barley/pellets: \_\_\_\_\_ 3500kg  
Feed weight – oats: \_\_\_\_\_ 2900kg  
Cattle/calves (field): \_\_\_\_\_ 40-50  
Cattle/calves (indoors): \_\_\_\_\_ 30-35  
Dimensions cattle height: \_\_\_\_\_ 13650x2440x2620

## M3800HD MOBILE MEAL FEEDER 🐮 🐑



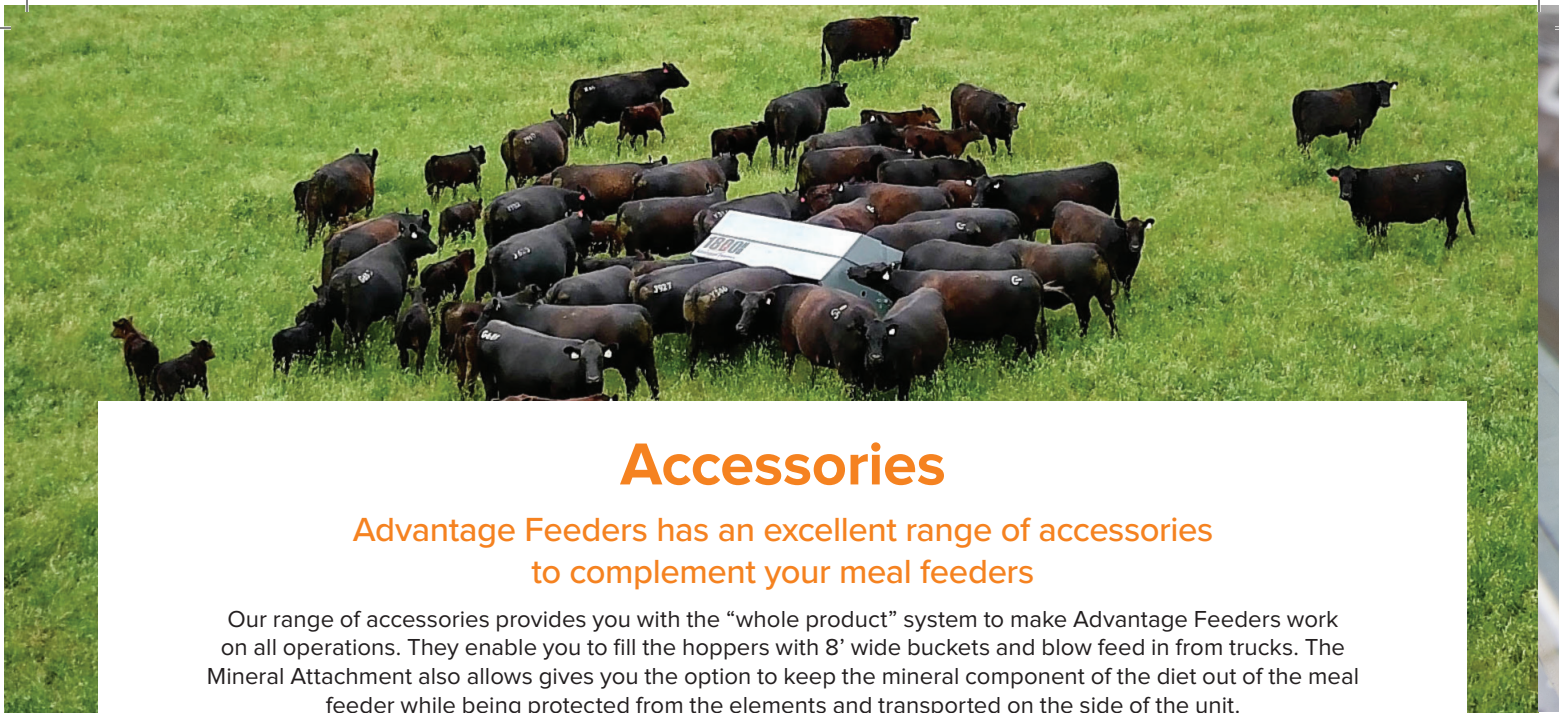
Weight: \_\_\_\_\_ 610kg  
Feed volume: \_\_\_\_\_ 3800 litres  
Feed weight – wheat: \_\_\_\_\_ 3000kg  
Feed weight – barley/pellets: \_\_\_\_\_ 2400kg  
Feed weight – oats: \_\_\_\_\_ 1900kg  
Cattle/calves (field): \_\_\_\_\_ 40-50  
Cattle/calves (indoors): \_\_\_\_\_ 30-35  
Ewes/lambs (field): \_\_\_\_\_ 200-250  
Ewes/lambs (indoors): \_\_\_\_\_ 120-150  
Dimensions cattle height: \_\_\_\_\_ 3660x1650x2370  
Dimensions sheep height: \_\_\_\_\_ 3660x1650x2170

## M1800HD MOBILE MEAL FEEDER 🐮 🐑



Weight: \_\_\_\_\_ 500kg  
Feed volume: \_\_\_\_\_ 1800 litres  
Feed weight – wheat: \_\_\_\_\_ 1400kg  
Feed weight – barley/pellets: \_\_\_\_\_ 1150kg  
Feed weight – oats: \_\_\_\_\_ 900kg  
Cattle/calves (field): \_\_\_\_\_ 40-50  
Cattle/calves (indoors): \_\_\_\_\_ 30-35  
Ewes/lambs (field): \_\_\_\_\_ 200-250  
Ewes/lambs (indoors): \_\_\_\_\_ 120-150  
Dimensions cattle height: \_\_\_\_\_ 3660x1650x1635  
Dimensions sheep height: \_\_\_\_\_ 3660x1650x1435





# Accessories

Advantage Feeders has an excellent range of accessories to complement your meal feeders

Our range of accessories provides you with the “whole product” system to make Advantage Feeders work on all operations. They enable you to fill the hoppers with 8’ wide buckets and blow feed in from trucks. The Mineral Attachment also allows gives you the option to keep the mineral component of the diet out of the meal feeder while being protected from the elements and transported on the side of the unit.

## STANDARD CAM KIT



Weight: \_\_\_\_\_ 500g  
 Dimensions -  
 pack of 8: \_\_\_\_\_ 210x150x25mm  
 Individual: \_\_\_\_\_ 75x55x20mm  
 Note: Retrofits ALL current HD Models and NGF3800, NGF1800 and NGF800 models.

## 800HD CAM KIT OR 150HD CAM KIT



**800HD Cam Kit** includes: 4 x Lower Adjuster Cams  
**150HD Cam Kit** includes: 2 x Lower Adjuster Cams + Lower Adjuster  
 Note: Retrofits ALL current HD Models and NGF3800, NGF1800 and NGF800 models.

## MINERAL ATTACHMENT



Weight: \_\_\_\_\_ 12kg  
 Feed volume: \_\_\_\_\_ 85 litres  
 Feed weight – minerals: \_\_\_\_\_ 110kg  
 Feed weight – pellets: \_\_\_\_\_ 50kg  
 Dimensions: \_\_\_\_\_ 760x400x550  
 Note: Brackets come standard with the Mineral Attachment to hang the unit on gates, fences or steel posts.

## BLOWER ATTACHMENT



Tube thickness: \_\_\_\_\_ 3  
 Note: For direct filling from supplier to avoid double handling (causing powdering and blockage). Suitable for the 5500HD and 3800HD.

## GREEDY BOARDS



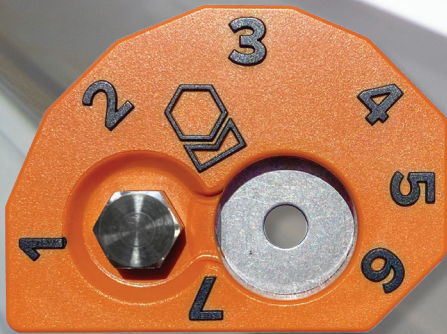
Weight: \_\_\_\_\_ 12kg  
 Dimensions: \_\_\_\_\_ 750x450x100  
 Note: The pair of Greedy Boards increase the filling width by 400mm. This increases the filling width of the 1800HD, 3800HD and 5500HD to 2700mm, the 500 to 2500mm and the 800HD to 1400mm.

### NEW LOWER ADJUSTER CAMS

CAN BE RETROFIT TO ANY ADVANTAGE FEEDERS HD MODELS OR THE SUPERSEDED NDF MODELS

**TO ORDER CALL 1800 817 462**





**NEW PRODUCT FEATURE**  
**LOW ADJUSTER CAM**  
 Retrofit your old model HD & NGF's

## Lower Adjuster Cam

You called for it, and we have delivered!



Our newest product feature and accessory for existing products, the Lower Adjuster Cam, improves our 3-Way Restriction System to be even more efficient and further develops the most controlled product on the Australian market.

The Lower Adjuster Cam is used to accurately set the Lower Adjuster position. The Lower Adjuster rests against any of the ten edges of the Lower Adjuster Cam. In addition to the seven edges indicated with a number, there are three edges for middle positions, 1.5, 2.5 and 3.5. These additional edges allow you to make fine adjustments to the Lower Adjuster position to provide you with more control over the ration.

### How does the Lower Adjuster Cam improve your experience?

- When several people on a farm set the feeders, it can inadvertently lead to slight variations in positioning. The edges on the Lower Adjuster Cam eliminate this variation
- Reducing the width of the Lower Adjuster when there is feed in the hopper can require a lot of force. The rotating nature of the Lower Adjuster Cam with the 13mm tube spanner makes this task easy

- Using the Lower Adjuster notch system at the ends of the trough required preliminary setting this part and then making fine adjustments. The Lower Adjuster Cam makes it quicker to set the feeders as it eliminates any need to make fine adjustments

### How do you change the setting?

To change the Lower Adjuster Cam position, simply use the 13mm tube spanner supplied with your feeder to loosen the Lower Adjuster locking bolt. Next, move the tube spanner onto the 13mm hexagon stainless steel extrusion, rotate the Lower Adjuster Cam to the desired position and then tighten the Lower Adjuster locking bolt.

A kit of 8x Lower Adjuster Cam can be purchased to retrofit your Advantage Feeders Meal Feeders. It is made from automotive plastics with internal steel parts.

***All new meal feeders ordered from the May 2022 will include the Lower Adjuster Cam as part of the meal feeder.***

If you would like to retrofit Lower Adjuster Cams to your current HD model Meal Feeders or the superseded NGF3800, NGF1800 and NGF800 Meal Feeders, please contact our sales team.



SCAN ME



For optimal results start creep feeding from birth.



## Creep Feeding

Promote early rumen development in calves and lambs

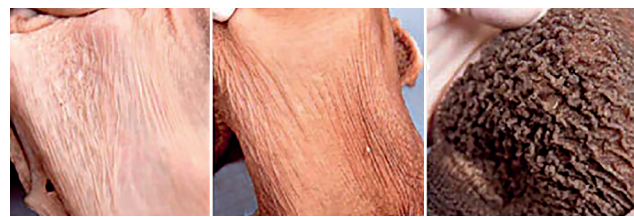
The rumen, the largest stomach in cattle, sheep and other ruminants acts like a fermentation vat that digests pasture and grains. The process of creep feeding gives the young stock the ability to convert pasture, other forages, and supplements into nutrients earlier than traditional milk fed only stock.

As pasture is the most cost-effective feed source, once the rumen is developed, livestock can absorb nutrients from this resource, leading to accelerated growth in a cost-effective manner. Done correctly, supporting livestock to make an early transition to pasture is a profitable exercise for farming enterprises.

### Starch-based feeds leads to accelerated papillae growth

The internal surface of a developed rumen is covered with tiny projections called papillae, which increase the surface area of the rumen and allow better absorption of digested nutrients. Figure 1. shows

the rumens of three different calves at the age of 6 weeks that have been fed three different rations. Image C. in Figure 1. shows a dramatic change to the productive capacity of the rumen wall due to adding grain to the diet of a young calf.



A. FED MILK ONLY

B. FED MILK AND HAY

C. FED MILK AND GRAIN

Figure 1. The transformational process of an infant ruminant. Source: Penn State University

Advantage Feeders is proud to support our customers with creep feeding equipment and advice. In the past, we have partnered with cattle and sheep enterprises and completed experiments to help you take the next step to increase profits on your farm.

# Calf Creep Gates & Lamb Creep Panels

Innovative creep feeding system that is both simple and easy

The Advantage Feeders Calf Creep Gates and Lamb Creep Panel systems makes creep feeding simple. Our Calf Creep Gates fold up for easy transportation. Each feeder can accommodate two Calf Creep Gates.

The Lamb Creep Panel system reduces the complexity of creep feeding lambs, with no reliance on the difference in body size of ewes and lambs, our system relies on the difference in skull size.

## CALF CREEP GATE NARROW 🐮



Weight: \_\_\_\_\_ 60kg

Assembled dimensions: \_\_\_\_\_ 1250x1400x1400

Compatible models: \_\_\_\_\_ 800HD

Note: Note: This product is sold singularly and feeders can accommodate two Creep Gates.

## CALF CREEP GATE WIDE 🐮



Weight: \_\_\_\_\_ 80kg

Assembled dimensions: \_\_\_\_\_ 2450x1400x1400

Compatible models: \_\_\_\_\_ 3800HD  
1800HD  
M3800HD  
M1800HD

Note: This product is sold singularly and feeders can accommodate two Creep Gates.

## LAMB CREEP PANELS 🐑



Weight: \_\_\_\_\_ 17kg

Assembled dimensions: \_\_\_\_\_ 2380x180x50

Compatible models: \_\_\_\_\_ 3800HD  
1800HD  
M3800HD  
M1800HD

Note: This product is sold as a pair and feeders can accommodate two Creep Panels. The 800HD comes standard with Creep Panels.





## Complementing Inadequate Pasture

Increase pasture conversion & reduce supplement inputs by feeding little & often

Feeding once a day or every second day is disruptive to the rumen and means that livestock need to be provided much more supplement compared to being fed through a feeder that they choose to visit 5-10 times per day.

Supplementing the rumen needs to be done often and in small amounts because feeding large amounts drops the rumen pH and leads to a die off of microbes, poor appetite and increased risk of acidosis. Advantage Feeders 3-Way Restriction System is the most accurate and controlled system to provide a little and often supplementation.

An experiment showed that when livestock are grazing pasture, the supplement requirement through the “little and often” system was 45% less than trail feeding every second day to achieve the same production goals.

Source: Leaver experiment

To achieve similar results, livestock must have access to enough pasture to keep their rumens full. If pasture is not available, livestock must be provided forages, such as hay, straw or silage to achieve similar results.

Visit [www.advantagefeeders.ie/trial-results](http://www.advantagefeeders.ie/trial-results) for the full results.

### Commencement

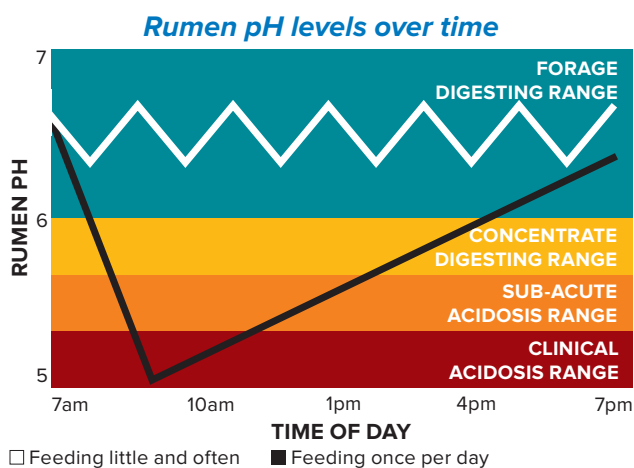
Little and often supplementation begins when the quality of feed on offer does not meet your production goals.

For young livestock that require 14-16% crude protein to maximise growth, supplementation will begin when the pasture goes to seed/head.

For mature livestock, this will often depend on their pregnancy status and quality of the pasture available. Livestock selectively graze the best type of pasture and rain on dry pasture can quickly reduce its quality. Depending on the season and the quantity of residual pasture and stubbles available, complementing these pastures.

### Completion

When there is enough new season pasture growth to meet your production objectives.



Source: [www.milkproduction.com/Library/Scientific-articles/Animal-health/Digestive-Physiology-of-the-Cow](http://www.milkproduction.com/Library/Scientific-articles/Animal-health/Digestive-Physiology-of-the-Cow)

SCAN ME



Find out more, watch our video on little and often supplementation feeding.





## Managing High Moisture Pasture

Drive profit by improving pasture utilisation through winter

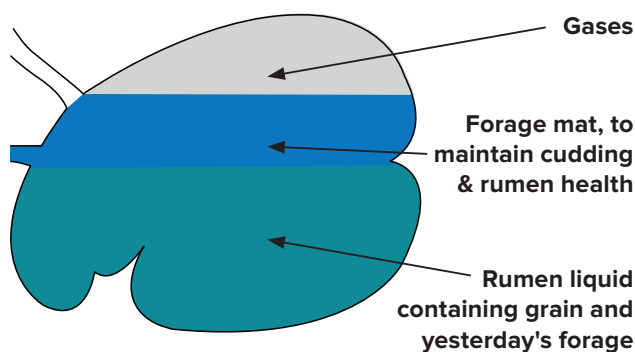
Supplementing with starch and effective fibre when pastures are new and in their vegetative state creates an effective rumen environment with a thick raft and productive microbes which leads to an increased stocking rate.

The low NDF (Neutral Detergent Fibre) in emerging pasture means that it breaks down in the rumen quickly and a large component can escape before the microbial population have utilised its nutrients. Because of these issues, supporting the rumen with the correct supplement feeds can make a large improvement in pasture utilisation, stocking rates, and annual farm production.

The best feeds to overcome the challenges of high moisture pasture and support a productive rumen are:

- A source of fibre. This improves the functioning of the rumen and slows the passage of feed. Common feeds used are hay, silage and straw.

- A source of starch. This feeds the microbes to better digest the nutrients in the rumen liquid. Common feeds used are pellets and barley.



SCAN ME



Easily calculate your ration costs for managing high moisture pasture.





## Manage Excess Protein

### Increase production on high protein pastures through supplementation

Actively growing plants are high in soluble protein, commonly as high as 25-30%, which can reduce the potential growth rate of livestock because their requirements are usually 14-16% in production. This is most commonly an issue over late Spring and for summer grazing season.

With insufficient energy (sugars and starch) to fuel microbial reproduction, a rumen that is high in soluble protein will produce a large amount of ammonia. This process requires the animal to waste energy on expelling the ammonia in urine instead of using that energy for growth.

This process can be avoided by supplementing grain-based or high starch feed, as the microbes can capture more of the rumen ammonia, converting it into microbial protein and thus ultimately having more energy for growth and weight production.

Source: [www.extension.psu.edu/protein-in-pastures-can-it-be-too-high](http://www.extension.psu.edu/protein-in-pastures-can-it-be-too-high)

#### How much should you supplement?

The most profitable feeding quantity is the amount that will “manage” the excess soluble protein. Feeding more than this, when lush pasture is available will decrease profit as pasture is generally cheaper for energy. In practice, Advantage Feeders experiments have shown excellent feed conversions

when 0.25% of body weight in fermentable carbohydrates has been supplemented per day. This is general advice, and you should consult your nutritionist for a recommended quantity to feed.

In this application, only small amounts of feed are required, which means Advantage Feeders 3-way Restriction System are set in the most restricted setting, so there is no risk of acidosis. \*Please note that livestock needs to be trained to the 3-Way Restriction System before the feeder can be used in the most restricted setting.

#### Commencement

You can receive the benefits from pasture germination as the pasture will commonly have a high soluble protein level and out strip the requirements of the animal. It will also depend on your operation and is most common to start at the beginning of spring when weaning has occurred and it is critical that young stock maximise their weight gain.

#### Completion

This occurs when the soluble protein in the pasture reduces to a level that is close to the requirement of the animal. This is commonly when pasture matures to the seed formation stage.

# Testimonials

## Dairy Farmer Testimonial

"I initially purchased my 3800HD feeders during the drought in 2018 to take the backache out of filling and hauling meal. Consequently, I found them an excellent way to train calves and keep feed fresh, while keeping the correct volumes fed to large groups. Based on the success of these feeders I purchased the 150HD model to feed bigger batches of younger calves on milk.

Farming is a labour challenged environment and the feeders give me the peace of mind of not having to trough feed daily. Once filled, I know that the feeders will continue to provide a constant source of feed for many days. Not only does it take away the chore of daily feeding but the stock are much more pacified than with trough feeding.

The overall health of my herd is now excellent. The animals are more docile and the feeders have removed feed stress completely. I have never had better replacement stock!

In summary, Advantage Feeders are a great way of managing concentrate feeding on grass and an excellent management tool to stretch grass. The feeders give our young stock a great foundation for the future. Advantage Feeders are now essential on my farm going forward."

**PJ O'Keeffe**  
**Dairy Farmer, Kilkenny**

## Beef and Dairy Farmer Testimonial

"The big advantage for me is the labour saving element. I can fill my feeder once per week and then I only have to check on the stock, instead of feeding daily.

The dairy calves have flourished on the feeder and the issue of weaker stock is eliminated as all stock have equal access. The feeder is then transferred over to the year and half beef heifers for finishing.

Whether you're feeding nuts or ration, they each work well in the feeder"

Tommy is using the 1800HD model, which holds up to 1 tonne to feed up to 76 dairy calves, 1kg per day of a calf nut."

**Tommy Egan**  
**Beef & Dairy Farming Kilkenny**



## Sheep Farmer Testimonial

"We purchased a Mobile 1800 Feeder in spring 2017 to use with our Pressure flock, (Triplet rearing ewes and ewe lambs rearing twins as well as any problem stock are all run together).

We set up the feeder so the ewes could get 0.5kg/day of whole barley for 5 weeks post lambing and as the feeder has a division in it we were able to lower the creep panel and set up the second side to creep feed the lambs with a highly palatable starter creep. This works very well for us with many triplet ewes able to wean over 100 kgs of lamb at 12 weeks.

Post weaning we also use the feeder to supplement soya hulls (Digestible Fibre) to our finishing lambs on Rape and Redstart at 0.1-0.2 kg /day which also works very well for us.

In the Autumn/Winter period, the feeder is used to supplement in lamb ewes at grass with 0.2kg of whole grain/day, and post scanning the triplet ewes at grass are also supplemented using the feeder, which we then move into the shed for them pre-lambing. This allows us to do only 1 mix/day with the Diet feeder.

Unlike a traditional creep feeder, we can regulate the intake, this means that our Advantage Feeders works virtually all year round for strategic supplementation. Being so impressed with it, we purchased a second feeder to help in times of drought."

**William Hutchinson**  
**Quality Pedigree Sheep**



# Advantage Feeders Product Specifications

Meal Feeders									
PRODUCT	WEIGHT	FEED VOLUME	FEED WEIGHT WHEAT	FEED WEIGHT BARLEY / PELLETS	FEED WEIGHT OATS	DIM. CATTLE HEIGHT	DIM. EXTENDED CATTLE HEIGHT	DIM. SHEEP HEIGHT	FILL HEIGHT
5500 HEAVY DUTY	610kg	5500L	4350kg	3500kg	2900kg	2450x2305 x2615mm	n/a	n/a	195mm < height
3800 HEAVY DUTY	430kg	3800L	3000kg	2400kg	1900kg	2440x1650 x2370mm	2440x1650 x2570mm	2440x1650 x2170mm	150mm < height
1800 HEAVY DUTY	350kg	1800L	1400kg	1150kg	900kg	2440x1650 x1635mm	2440x1650 x1835mm	2440x1650 x1435mm	150mm < height
800 HEAVY DUTY	200kg	850L	600kg	500kg	425kg	1200x1650 x1635mm	1200x1650 x1835mm	1200x1650 x1435mm	150mm < height
500 MEAL FEEDER	160kg	500L	n/a	325kg	n/a	n/a	n/a	2200x1160 x760mm	700mm < height
150 HEAVY DUTY	33kg	150L	110kg	90kg	75kg	n/a	n/a	820x388 790mm	n/a

Mobile Meal Feeders								
PRODUCT	WEIGHT	FEED VOLUME	FEED WEIGHT WHEAT	FEED WEIGHT BARLEY / PELLETS	FEED WEIGHT OATS	DIM. CATTLE HEIGHT	DIM. SHEEP HEIGHT	FILL HEIGHT
5500 MOBILE HEAVY DUTY	680kg	5500L	4350kg	3500kg	2900kg	2450x2305 x2615mm	n/a	195mm < height
3800 MOBILE HEAVY DUTY	610kg	3800L	3000kg	2400kg	1900kg	3660x1650 x2370mm	3660x1650 x2170mm	150mm < height
1800 MOBILE HEAVY DUTY	500kg	1800L	1400kg	1150kg	900kg	3660x1650 x1925mm	3660x1650 x1730mm	150mm < height
1000 MOBILE HEAVY DUTY	265kg	1000L	770kg	650kg	520kg	3465x1200 x1325mm	3465x1200 x1175mm	n/a

## Creep Gate and Creep Panels

PRODUCT	WEIGHT	ASSEMBLED DIMENSIONS	COMPATIBLE MODELS
CALF CREEP GATE NARROW (EACH)	60kg	1250x1400x1400mm	5500HD 3800HD 1800HD M5500HD M3800HD M1800HD
CALF CREEP GATE WIDE (EACH)	80kg	2450x1400x1400mm	800HD
LAMB CREEP PANELS (PAIR)	17kg	2380x180x50mm	3800HD 1800HD M3800HD M1800HD

## Accessories

PRODUCT	WEIGHT	SPECIFICATIONS
BLOWER ATTACHMENT	n/a	Camlock fitting – 100mm. Tube Thickness – 3mm
GREEDY BOARDS	12kg	Assembled dimensions: 750x450x100mm
LOWER ADJUST CAM - 150HD KIT	1.5kg	Pack of 2 Cams + Adjuster Guard - 750x100x100mm Individual dimensions: 75x55x20mm
LOWER ADJUST CAM - 800HD KIT	250g	Pack of 4 - 210x150x25mm. Individual dimensions: 75x55x20mm
LOWER ADJUST CAM - STANDARD KIT	500g	Pack of 8 - 210x150x25mm. Individual dimensions: 75x55x20mm Retrofits ALL current HD Models and NGF3800, NGF1800 and NGF800 Models
MINERAL ATTACHMENT	12kg	Feed Volume: 85 litres Feed Weight – barley/pellets: 50kg Feed Weight – minerals: 110kg

Note: ALL assembled feeder footprints will fit an 8ft tray, **EXCLUDING assembled ALL Mobile Meal Feeders as units.**



# VERSATILE FEEDERS

## USE INSIDE AND OUT



### BENEFITS OF USING ADVANTAGE FEEDERS

- ✓ Improve growth rates and weight gain
- ✓ Feed cheap grain rations safely
- ✓ No wastage
- ✓ Increase grass conversion
- ✓ Used across all seasons

### FREE DELIVERY

Free delivery is offered for most of the Ireland. For this to apply, orders must include a Meal/Pellet Feeder. Delivery outside the free delivery area or for orders that don't include a feeder can incur additional delivery costs.

\*See [www.advantagefeeders.ie](http://www.advantagefeeders.ie) for the full terms and conditions.

### TWO YEAR WARRANTY

You can rest assured that your feeders will last a long time. A two year warranty on all feeding products guarantees that they will be fit for purpose based on them having fair treatment.\*

*Distributed by:*



**DAIRY DIRECT**  
*Bringing milk quality to a new level*

DAIRY DIRECT  
POTTLERATH  
KILMANAGH  
CO. KILKENNY  
[enquiries@advantagefeeders.ie](mailto:enquiries@advantagefeeders.ie)



**ADVANTAGE  
FEEDERS**

**1800 817 462**  
**[advantagefeeders.ie](http://advantagefeeders.ie)**